

# YDE500/700

## Ceiling Operating Lamp

OPERATING ROOM

Great performance in a compact size



- Super slim ABS white shell cover, more smart and slim. Streamlined, ultra-thin, enclosed head with reduced air resistance to minimize contamination. With ergonomic and sterile control, it is suitable for variety surgical situations. Solid state, energy efficient LED technology requires minimal energy to operate.
- Germany made OSRAM LED beads and French Gaggione lens guarantee a uniform nature cool lighting in surface and deep cavity procedures.
- Adopted single 1w LED beads, lighting double traverse technology combine automatic shadow eliminating tech and Anti-dizziness tech. The shell covers have great heat dissipation, generating essentially ZERO infrared or ultraviolet light, high efficiency beads layout is superior than other type designs, can get an almost unlimited LED life expectancy.



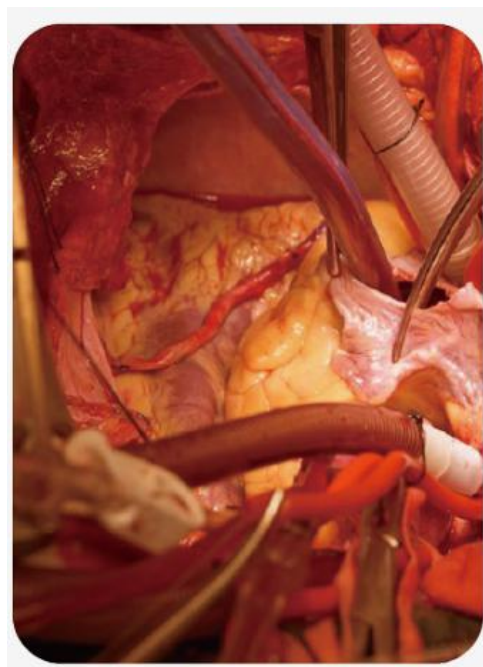
German Osram LED beads, French Lens



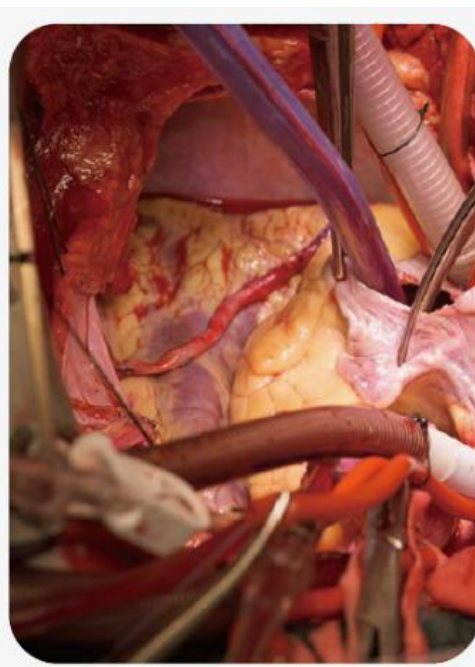
LCD screen panel with endoscopy function



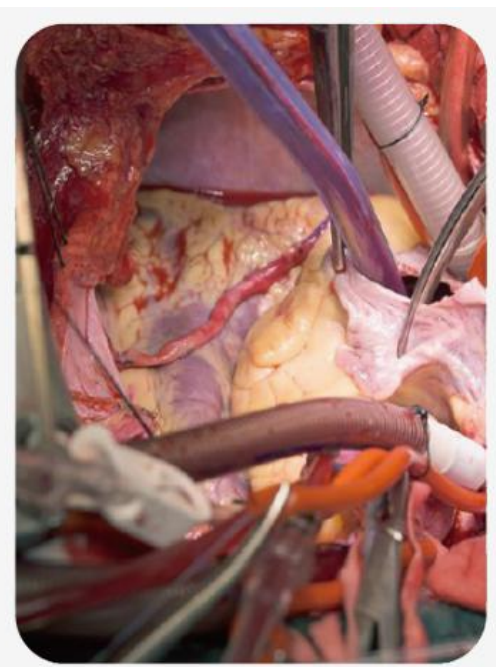
Indirect Light for better comfort



warm light



neutral light



daylight/ cool light

YDE500/700 color temperature: 3,500-5,500K, Color rendering: 97. Intelligent spot homogeneous tech.

**NEW systems high illumination**

YUDA YDE500/700, YDE500(160,000Lux) and YDE700(190,000Lux). New systems with higher illumination values can compensate maintained illuminance by ageing , working life and environmental influences.

**Manual Focus, optional: electric focus**

LCD touch screen panel control, endoscopy standard.

**Double traverse lighting + Automatic Shadow eliminate technology+ anti-dizziness resolve**

Greater light output is 2 or 3 times higher than other lights, clear spot profile and uniform illumination to deep cavity procedures.

**New Cold LED light Source**

Lowest ultraviolet and infrared in light spectrum, temperature rising less than 2 °C . single1W German LED cost effective for hospitals.

**Long Service Life Span**

At least 100,000 hours LED life span, no need to replace LED beads. Low lifetime maintenance cost.

**Multi-patch superposition tech on spot light, getting indirect lighting for comfort**



## Technical Specifications

Technical data	unit	700 lamp head	500 lamp head
Spot center illumination in color temperature 5000K	Lux	160,000--200,000	120,000-180,000
Color temperature	K	3500-5500	3500-5000
Ra		97	97
50% Spot diameter d50	mm	150	150
10% Spot diameter d50	mm	300	300
Illuminance depth	cm	130	100
Illuminance adjusting range	%	25-100	25-100
Ultraviolet irradiance wavelength under 40nm	W/m <sup>2</sup>	≤0.002	≤0.002
Focal distance adjusting mode		Manual/electric (optional)	Manual/electric (optional)
Beads power	W	1W/unit×60beads	1W/unit×45beads
Power supply		110V/220V 50Hz/60Hz	110V/220V 50Hz/60Hz
Input power	W	100	100
LED average life	H	≥100,000	≥100,000
Installation ceiling height	m	2.65-3.2	2.65-3.2



Industrial ABS shell cover, more slim more lightly more solid. Enclosed head with reduced air resistance to minimize contamination. Better heating absorb to support 100,000 hours life span.

Standard endoscopy type can be achieved remote control. 360 degree rotation lamp head.

